

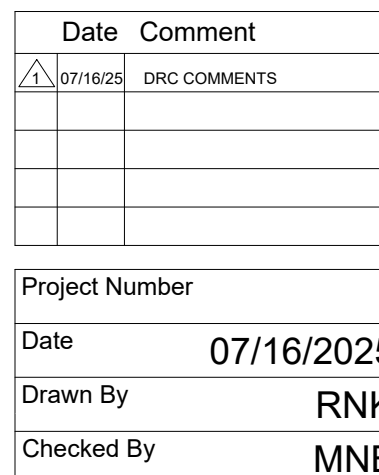
IRRIGATION DETAILS

COMMERCIAL TENANT IMPROVEMENT PLANS

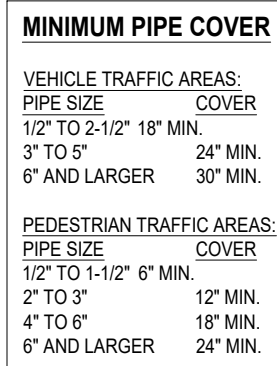
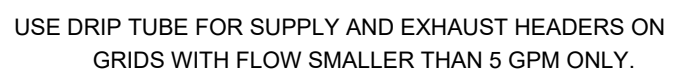
Office Warehouse

115 NW 16TH ST.
Pompano Beach, FL - 33060

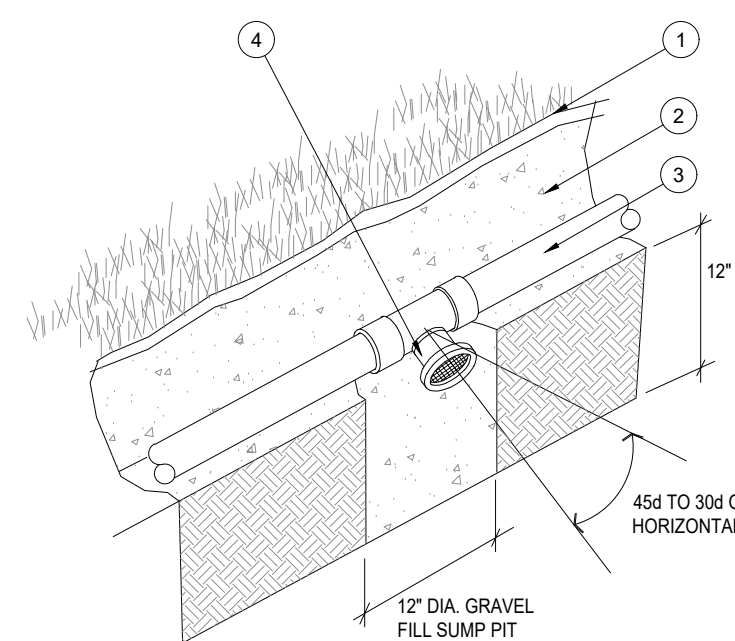
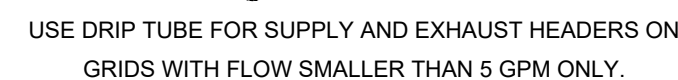
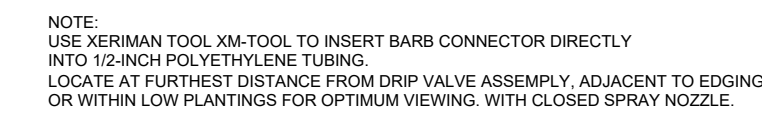
Pompano Beach, FL - 33060



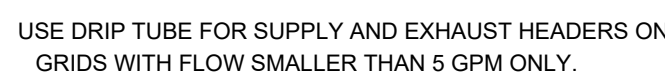
LI-2



- 1 PAVEMENT SURFACE
- 2 FINISH GRADE
- 3 TRENCH BACKFILL
- 4 LOCATOR WIRE (W/BURIED CAUTION TAPE)
- 5 PVC IRRIGATION LATERAL
- 6 SAND BACKFILL
- 7 SCH. 40 PVC LATERAL SLEEVE - SEE PLANS FOR SIZE
- 8 SCH. 40 PVC WIRE SLEEVE FOR CONTROL WIRES, MIN. 2" DIA.
- 9 SCH. 40 PVC MAINLINE SLEEVE - SEE PLANS FOR SIZE
- 10 PVC IRRIGATION MAINLINE
- 11 CONTROL WIRES - TAPE TO MAINLINE AT 10' INTERVALS
- 12 PVC CAP. SOLVENT WELDED



- 1 FINISH GRADE
- 2 PIPE TRENCH
- 3 LATERAL LINE PIPE
- 4 AUTOMATIC DRAIN VALVE



- ① CITY MAINLINE
- ② TAP
- ③ SERVICE LINE
- ④ WATER METER
- ⑤ ISOLATION VALVE (PER PLAN)
- ⑥ MANUAL DRAIN VALVE (BALL VALVE)
- ⑦ BLOW OFF VALVE (BOV)
- ⑧ BACKFLOW DEVICE (WHERE SHOWN)



- WINTERIZATION PROCEDURE:**
1. TURN OFF EITHER THE METER AND ISOLATION VALVE (DEDICATED IRRIGATION METER) OR ISOLATION VALVE (DOMESTIC TAP)
 2. OPEN THE CONTROL VALVE TO RELIEVE PRESSURE
 3. SLOWLY OPEN MANUAL DRAIN VALVE
 4. REPEAT PROCEDURE FOR ALL MANUAL DRAIN VALVES ALONG IRRIGATION MAINLINE
 5. CLOSE MANUAL DRAIN VALVES AND BLOW OUT REMAINING WATER FROM THE BLOWOUT VALVE. SLOWLY INCREASE AIR PRESSURE. NOT TO EXCEED 80 PSI. DO NOT BLOWOUT SYSTEM FROM BACKFLOW. BLOWOUT SYSTEM TWICE BUT NOT TO EXCEED AT MORE THAN 2 MIN. INTERVALS.

